

Quinny®

Quinny® buzz

4-Wheeler

Instructions for use & Warranty

www.quinny.com

DEAR PARENTS

Congratulations on the purchase of this Quinny Buzz pushchair.

Quinny represents high-quality products that are not only beautiful, they are also thoroughly practical, safe and comfortable.

Please read this instruction manual carefully. This will enable you to make the best use of the capabilities of this pushchair and will ensure both your own safety and comfort and that of your child.

We hope that you will enjoy this Quinny Buzz.

Dorel

CONTENTS

1 IMPORTANT: KEEP FOR FUTURE REFERENCE

2 SAFETY INSTRUCTIONS

3 PRODUCT DESCRIPTION

4 PREPARING FOR USE / UNFOLDING AND FOLDING / DISMANTLING

- 4.1 Preparation for use
- 4.2 Folding and Unfolding

5 PLACING YOUR CHILD IN THE QUINNY BUZZ

- 5.1 General
- 5.2 Adjusting the length of the belt
- 5.3 Adjusting the length of the shoulder belt

6 CLEANING AND MAINTENANCE

- 6.1 General
- 6.2 Cleaning the Quinny Buzz seats (comfort cushion and XL seat)
- 6.3 Maintaining the Quinny Buzz tyres

7 SEPARATING WASTE

8 WARRANTY

9 QUESTIONS

Disclaimer:

The utmost care was exercised in designing and compiling this instruction manual. We cannot, however, offer any guarantees with regard to the completeness and correctness of the information contained herein.

1 IMPORTANT: KEEP FOR FUTURE REFERENCE

- WARNING

Please read this instruction manual carefully and keep it for future reference. If these instructions are not followed, the safety of your child may be severely endangered.

- WARNING

A child's safety is your responsibility.

- WARNING

It can be dangerous to leave your child unattended.

- WARNING

Always set the parking brake on the pushchair when you are standing still.

- WARNING

Always secure your child with the safety harness as soon as your child can sit up unassisted.

- WARNING

Always secure your child with the safety harness! Ensure the harness is adjusted correctly to fit your child.

- WARNING

Do not hang anything from the handlebar. This will make the pushchair less stable and will increase the risk of tipping over.

- WARNING

Keep all small parts like the tyre valve caps away from children. Your child could swallow them and they therefore pose a choking hazard. Also keep the hand pump out of the reach of children.

- WARNING

Prevent the danger of suffocation and keep plastic bags out of the reach of children.

- WARNING

This product is not suitable for jogging or in-line skating behind the pushchair.

- WARNING

Check to make sure that all locks are secured before each use in order to avoid getting anything jammed between parts.

- WARNING

Before each use check that the carrycot, adapters and/or seats are installed correctly and securely locked.

- WARNING

The black tyres may leave marks on some smooth floors (particularly synthetic laminates, parquet and linoleum).

- WARNING

The raincover should not be used indoors.

2 SAFETY INSTRUCTIONS

- Use the Quinny Buzz for only one child at a time.

- The Quinny Buzz is suitable for children from birth to age 4 (maximum of 15 kg).
- When being used from birth, we recommend that the Quinny Buzz is used together with a Dreami carrycot or Maxi-Cosi baby car seat.

- **The Quinny Buzz seat is not suitable for use in a car.** Use a Maxi-Cosi baby/child car seat for this purpose.

- The Quinny Buzz comes with two seats; a so called comfort cushion for children up to about the age of 18 months and an XL seat for children of about 18 months and older.

- This frame unfolds automatically through means of a gas spring. Make sure that the transport lock is always used! Do not put your fingers on or in the mechanism and only lift the handlebars slightly to activate the gas spring.

- Keep your child and your fingers/hands away from moving/folding parts when unfolding or adjusting the Quinny Buzz.

- Never lift the Quinny Buzz or use escalators or stairs when your child is sitting or lying in the pushchair.

- Inspect and clean the Quinny Buzz frequently.

- Do not remove the logos from the fabric cover. This will avoid damaging the fabric cover.

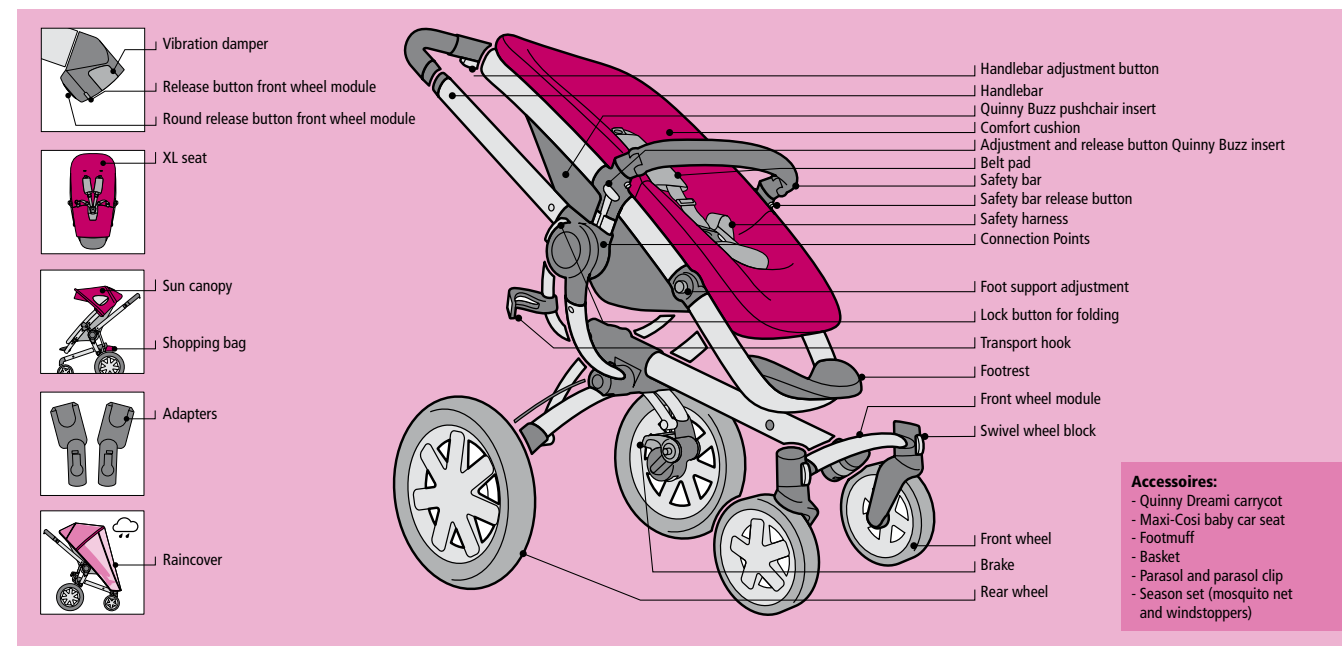
- Prevent the danger of suffocation and keep plastic bags out of the reach of children.

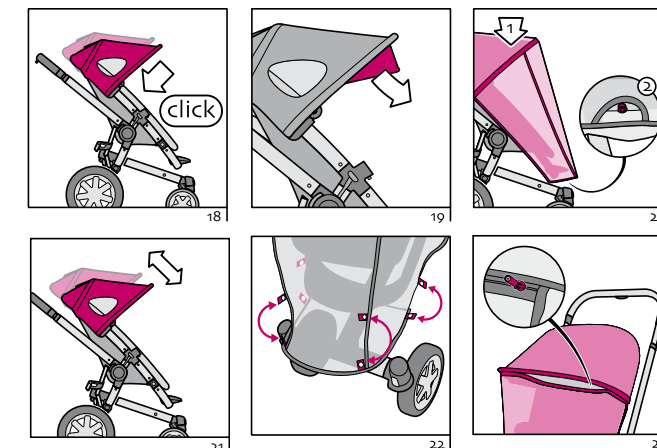
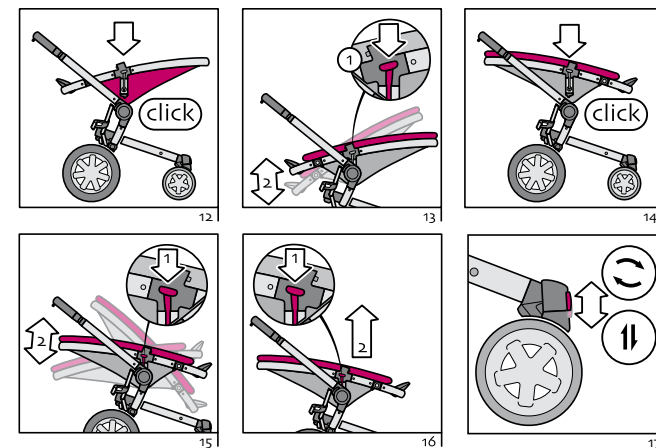
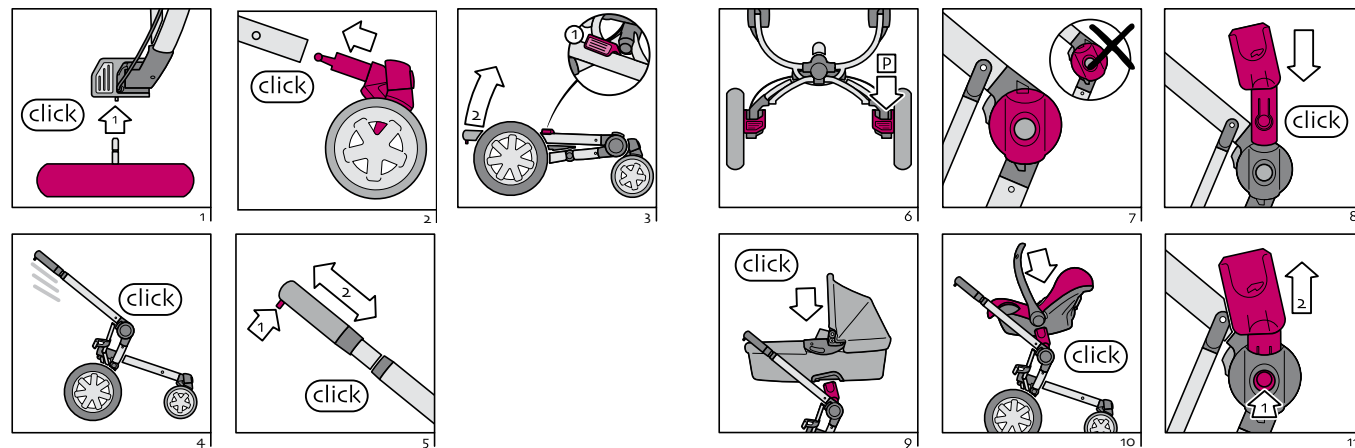
- Only use original parts and accessories that have been endorsed by the manufacturer. Do not make any modifications to the product. Contact your supplier or importer if you have any complaints or problems.

Quinny Buzz Approved in accordance with BS 7409:1996

Type of pushchair	Body weight	Age
Stroller with carrycot	max. 9 kg	From birth to approx. 6 months
Stroller with a Maxi-Cosi baby car seat	max. 13 kg	From birth to approx. 12 months

3 PRODUCT DESCRIPTION





4 PREPARING FOR USE / UNFOLDING AND FOLDING / DISMANTLING

Please note: the left and right sides are as seen from the handlebar/back.

4.1 Preparation for use

Fitting the wheels

1. Insert the axle of the rear wheels into the Quinny Buzz frame until you hear it 'click' (Fig. 1).
2. Push the front fork into the frame until it 'clicks' (Fig. 2).

Unfolding the frame

The Quinny Buzz has a unique mechanism, which results in the automatic unfolding of the frame. The temperature of the environment may somewhat affect the workings of this mechanism; in case of cool or freezing temperatures the Quinny Buzz may unfold slower than usual (room temperature).

- **Warning:** do not touch any moving parts with your hands as the frame unfolds.
3. Push the transport hook near the right rear bar to the side and pull the handlebar up (Fig. 3).
 4. The frame automatically unfolds. The handlebar clicks into the locking device (Fig. 4).

Adjusting the handlebar height

- Push the adjustment button in and slide the handlebar to the desired height. The handlebar will lock with a 'click' (Fig. 5).

Parking brake

- **Note:** always use the parking brake, even when standing still for only a few moments!

1. Push down on the red pedal (P) to set the parking brake on the Quinny Buzz (Fig. 6).
2. Push down on the other pedal to release the brake of the Quinny Buzz.

Adapters

The adapters and the corresponding connection points are marked with an L (left) and an R (right).

1. Make sure that connection points are facing directly upwards, if necessary adjust using silver button in connection point (Fig. 7).
2. Slide adapter into connection point (Fig. 8).
3. Check to make sure everything is secure.
4. Place the Dreami (Fig. 9). For further use see the instructions for the carrycot.
5. Place the Maxi-Cosi baby car seat (Fig. 10). For further use see the Maxi-Cosi baby car seat instruction manual.
6. Remove the adapter by pressing in the button (on the inside) and pull the adapter from the Quinny Buzz frame (Fig. 11).

Quinny Buzz seat unit

The Quinny Buzz seat unit is suitable for children from birth to age 4 (maximum of 15 kg). If your child is not yet able to sit up unassisted, use the reclining position only.

- **Note:** the pushchair seat unit can only be fitted when the adapters have been removed.

1. Lower the Quinny Buzz seat onto the Quinny Buzz frame until it 'clicks' (Fig. 12).

Placing the Quinny Buzz seat & adjusting the seat

Rearward facing

1. The Quinny Buzz seat can now be adjusted to two positions: a sitting position and a reclining position. Push the adjustment/release buttons on both sides downwards and tilt the Quinny Buzz seat into the desired position (Fig. 13).
2. The Quinny Buzz seat can also be placed in a forward-facing position (Fig. 14).
3. The Quinny Buzz insert can now be adjusted to three positions: a sitting position, a semi-reclining position and a reclining position. Push the adjustment/release buttons on both sides downwards and tilt the Quinny Buzz insert into the desired position (Fig. 15).

IMPORTANT: When positioning and adjusting the Quinny Buzz seat check that the adjustment/release buttons are locked on both sides.

Removing the Quinny Buzz insert

1. Push the adjustment/release buttons on both sides downwards and lift the Quinny Buzz seat from the Quinny Buzz frame position (Fig. 16).

Locking the swivel wheel

It is advisable to lock the swivel wheel into a fixed position when driving the pushchair straight ahead for a longer period.

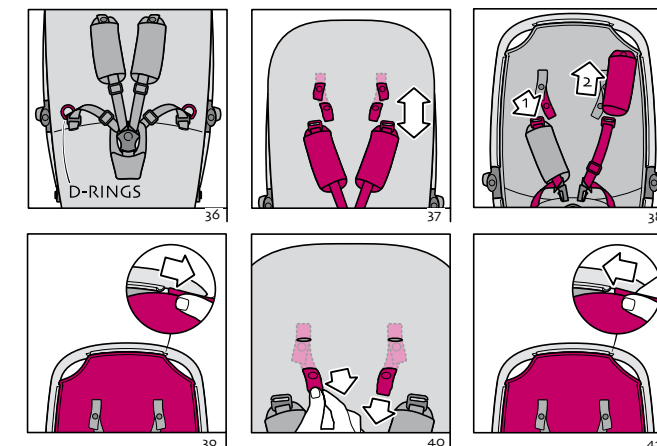
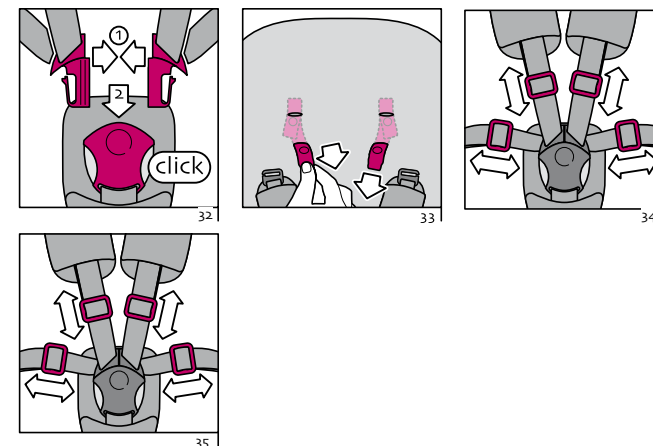
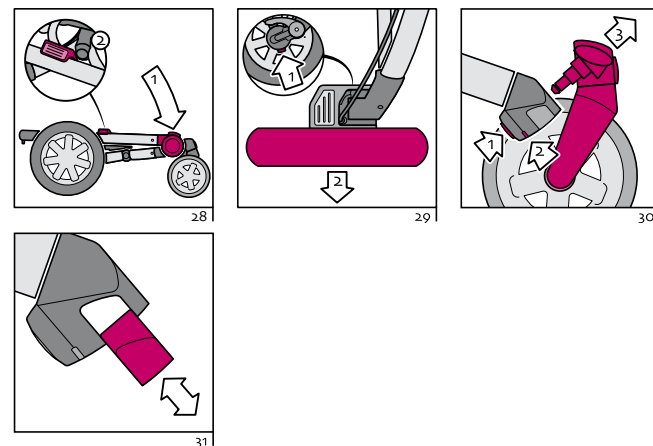
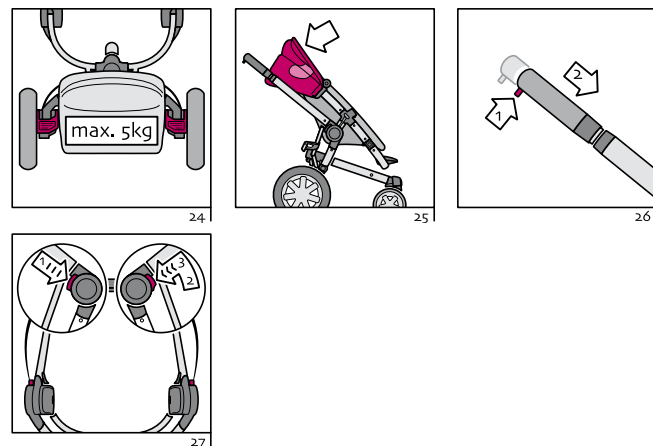
1. Turn the front wheels to the rearmost position and push the swivel locks down. The front wheels are now locked into their fixed position.
2. To unlock the swivel wheels, push the swivel wheel locks upwards (Fig. 17).

Sun canopy

1. Clip the sun canopy onto the frame of the Quinny Buzz seat. Check that the sun canopy is properly secured. The sun canopy is height adjustable (Fig. 18).
2. To remove the sun canopy push the clips off the frame.
3. There is a special sun shade for extra protection. Unfold the sun shade from under the sun canopy towards the outside (Fig. 19).

Raincover

1. Place the transparent raincover over the sun canopy and hook it over the underside of the footrest (Fig. 20).
2. The sun canopy is height-adjustable (Fig. 21). With the sun canopy at its lowest setting: close the snaps on the foot section (Fig. 22).
3. The (double) zipper in the rain cover can be opened for extra ventilation (Fig. 23).



Shopping bag

1. Hook the bag onto the furthest bar at the back. This shopping bag when placed between the rear wheels has a carrying capacity of a maximum of 5 kg (Fig. 24).
- **Note:** Use the storage features only as directed and do not exceed the maximum weight limit.

4.2 Folding and unfolding

Folding

1. If you want to fold the Quinny Buzz with the pushchair seat still attached, this is only possible when the seat is placed in the forward-facing position and the seat-back is in the reclined position. We recommend that the pushchair seat is always removed before you fold up the pushchair.
2. Set the brake on the Quinny Buzz.
3. Collapse the sun canopy (Fig. 25).
4. Push in the adjustment button and slide handlebar in (Fig. 26).
5. Always stand beside the front wheel. Push in the (left) "ribbed" control button. Simultaneously slide the (right) control button with "arrows" in the direction of the arrows with your thumb and then press this button. While keeping both buttons pressed, pull the frame downward at an angle in the direction of the front wheel (Fig. 27).

- **Note:** If you do not press in the buttons far enough whilst folding the frame, you will hear a snapping sound. To prevent this, you should press the button with the arrows more firmly, before moving it forwards.

6. Push the Quinny Buzz frame as far as possible downward so that the handlebar can be clicked into the transport hook (Fig. 28).

- **Note:** The transport hook **must always be clicked into the handlebar for security** when the Quinny Buzz is folded up or stored! This prevents the Quinny Buzz from unfolding itself during transport.
- **Note:** Prevent your fingers from getting jammed! Do not place your fingers between the transport hook and the frame.

If you want to fold the frame even smaller:

7. Remove the seat before you start folding the Quinny Buzz.
8. Remove the wheels if necessary.

Removing the wheels

1. Rear wheels: press the release button and pull the rear wheels out of the Quinny Buzz frame (Fig. 29).
2. Removing the front wheel module: First, press in the round release button at the bottom of the front wheel. We recommend you use a small coin to press in the second release button. Keep the button at the front side pressed in and remove the front wheel (Fig. 30).
3. Remove the suspension for regular maintenance (see Maintenance) (Fig 31). Replace the suspension after cleaning before reinstalling the front wheel. To reinstall the front wheel module: carry out the previous steps to remove the front wheel in reverse order.

5 PLACING YOUR CHILD IN THE QUINNY BUZZ

5.1 General

- **Note:** engage the brake on the Quinny Buzz before placing your child in the Quinny Buzz seat. Ensure that the safety harness is open.

1. Slide the buckle sections together and click them into the buckle so that the lap belt and the shoulder belts are fastened to the crotch strap (Fig. 32).

5.2 Adjusting the length of the belt

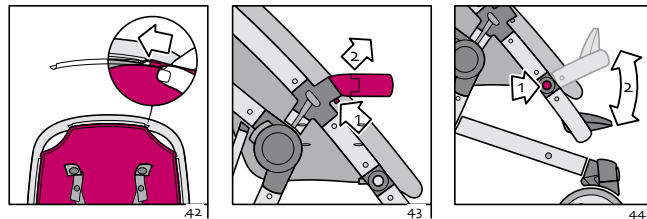
The length of the belt can be adjusted in different ways to match the size of your child.

1. Using the loop: loosen the belt pads and secure the hook to the desired height within the loop of the Quinny Buzz seat (Fig. 33). Reattach the belt pads.
2. Using the clasps: loosen the belt pads and lengthen or shorten the belts using the clasps (upper and/or lower) (Fig. 34). Reattach the belt pads.
3. There are D-rings for attaching an additional safety harness. The standard for this type of harness is BS EN: 13210 / BS 6684 (Fig. 35).

5.3 Adjusting the length of the shoulder belt

The shoulder belts can be set to 2 heights (Fig. 36).

1. Loosen shoulder belt hook and remove the belt pad (Fig. 37).
2. At the top, slide the cord of the comfort seat or the XL seat out of the top edge of the Quinny Buzz seat (Fig. 38).
3. Pass the loops of the shoulder belts through the required opening in the comfort cushion or the XL seat (Fig. 39).
4. Replace the belt pads over the shoulder belts. Attach hooks to the loop of the Quinny Buzz seat. Slide the belt pad up over the shoulder belt. Secure with the press-stud (Fig. 40).
5. At the top, slide the cord of the comfort cushion or the XL seat into the top edge of the Quinny Buzz seat (Fig. 41).



6 CLEANING AND MAINTENANCE

WARNING

- Check regularly to make sure that the Quinny Buzz functions properly. This is essential for your child's safety.
- For reasons of safety, always use original parts.
- In the event of damage have your retailer check and/or repair your Quinny Buzz before using it.
- After cleaning never use Vaseline or fat as lubricants; this attracts dirt and grime. Preferably use a dry Teflon spray.
- Clean the frame, the fabric cover and the shopping bag regularly using a damp cloth. Do not use abrasive cleaners.
- Rinse the suspension under the tap. Clean the black portion with a damp cloth.

6.1 General

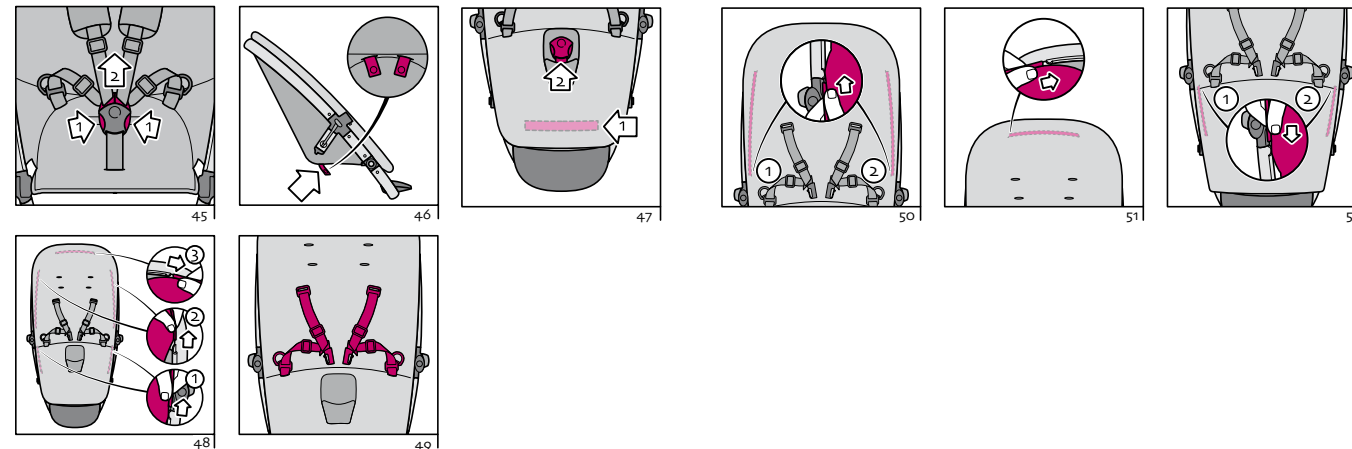
- During rain always use the raincover to protect the fabric cover.
- After use, dry the pushchair with a soft, absorbent cloth.
- Remove the detachable wheels once a month, then clean the axles and treat them with a dry Teflon spray.
- Never use the pushchair in seawater. After use on the beach, clean the wheels and the frame thoroughly with water to prevent rusting/corrosion.

Safety bar

1. Click the safety bar into the openings on the Quinny Buzz pushchair seat (Fig. 42).
 2. To remove the safety bar, press the buttons and pull the safety bar forward. The safety bar can be swung open by releasing it on one side (Fig. 43).
- **Note:** Always secure your child with the restraining straps.

Footrest

1. The footrest and legrest on the Quinny Buzz insert is adjustable. Upwards: place footrest in required position.
Downwards: press footrest adjustment buttons on both sides and move support downwards (Fig. 44).
- **Note:** never allow your child to stand or sit on the footrest.



6.2 Cleaning the Quinny Buzz seats (comfort cushion and XL seat)

1. Open safety harness (Fig. 45).
2. Unfasten the shoulder belt snap and hook and remove the belt pad.
3. Loosen all snaps on the bottom of the seat (Fig. 46).
4. Loosen the Velcro straps on the bottom of the seat. Remove the belt buckle through the opening of the seat (Fig. 47).
5. Slide the cord of the seats out of the edges of the Quinny Buzz seat. Start with the foot section and work towards the head section (Fig. 48).
6. Pull the lap belt of the Quinny Buzz seat through the holes of the seats and remove the loops from the shoulder belts from the openings of the seat (Fig. 49).

Both the comfort cushion and the XL seat must be washed by hand (maximum 30°). Do not use a drier. Also see washing instructions.
During washing the seats may become somewhat deformed. You can push the seats back into their original shape.

The replacement of the comfort cushion is accomplished in the reverse order.

Installing the XL seat

1. Pull the beading on the XL seat completely through the vertical edge at the top. Start on the left side and switch from right to left until it is completely in place. Make sure to also pull it through the top edge (fig. 50).
2. Pull the beading through the horizontal edge at the top (fig. 51).
3. Pull the XL seat completely downwards and pull the beading through the bottom edge (fig. 52).
4. Secure the belt buckle, Velcro and belt pad.

6.3 Maintaining the Quinny Buzz tyres

- Make sure that all tyres are properly inflated and that their pressure is consistent. This gives the pushchair a smoother ride and prevents damage to (and squeaking of) turning and hinged parts.
- Inflate the rear tyres to a maximum pressure of 26 PSI/1.8 Bar. The tyres are fitted with a 'car tyre valve'. They can be inflated using the pump supplied (in shopping bag). The valves on the rear wheels can be easily accessed from the inside of the wheel.
- A punctured inner tube can be repaired in the same way as a bicycle tyre. Loose inner tubes can be purchased via your supplier.
- Always deflate the tyres when taking the Buzz on an aircraft, as the air pressure difference could cause the tyres to burst.
- The tyres may leave black marks on some surfaces, particularly smooth floors like parquet, synthetic laminates and linoleum.

7 SEPARATING WASTE

With the environment in mind, we request that you separate the packaging waste of the Quinny Buzz. In addition, waste at the end of the service life of the Quinny Buzz (product parts) should be separated.

WARNING

Keep plastic wrapping material out of reach of your child in order to avoid the risk of suffocation.

Packaging	
Cardboard box	Paper waste
Plastic bag	Residual waste
Products parts	
Fabric cover	Residual waste
Plastic parts	In the appropriate container
Metal parts	Container for metal
Pneumatic tyres	Residual waste
Tether	Container for polyester

8 WARRANTY

Dorel UK guarantees that this product complies with the safety requirements as specified in current European safety standards, and that this product is free from defects in workmanship and material at the time of purchase. You should contact your retailer if this product shows material and/or manufacturing faults (with normal use as described in the instruction manual) after purchase and during the warranty period. The warranty period is 24 months for plastic and metal parts and 12 months for other parts susceptible to wear and tear, such as the fabric cover. This does not, of course, include the normal wear that may be expected with the daily use of a product.

The guarantee is not valid in the following cases:

- The product is not submitted for repair through a recognised Dorel UK supplier.
- The product is not supplied to the manufacturer with the original purchase receipt (via the retailer and/or importer).
- Repairs were carried out by third parties.
- If the barcode sticker is damaged or has been removed.
- The defect is the result of improper or careless use or maintenance, negligence or impact damage to the fabric cover and frame.
- The defect is the result of an accident or airplane travel.
- The defect is the result of overloading (exceeding the maximum weight allowance for your child and/or packages).
- The defect is the result of carrying two children and the use of standing boards or seats.
- The parts show normal wear that may be expected from daily use.
- There is normal wear and tear to the wheels, tyres and/or fabric cover (such as a flat tyre and/or loose snaps).
- There is discolouration of the fabric cover or there are water marks due to washing, rainwater, or excessive exposure to sunlight (UV).
- Damage to the fabric cover was caused by things such as clothing, zippers or snaps.
- The product has been involved in a collision with a pavement kerb or heavy shop door, for example. This could cause the wheels and/or axles to be thrown out of alignment or bend as a result of which the pushchair will no longer track correctly.
- There is damage to surfaces, such as synthetic laminate floors, due to tyre marks.
- The stated warranty terms and conditions have not been otherwise satisfied.

Effective date:

The warranty becomes effective on the date the product is purchased.

Warranty period:

The warranty on the plastic parts and metal parts is valid for a period of 24 consecutive months. For other parts that are subject to wear and tear, the warranty period is valid for 12 consecutive months. The warranty only applies to the first owner and is not transferable.

What to do in case of defects:

In case of problems or defects please contact your retailer. If the fault cannot be rectified, the retailer will send the product, together with a description of the complaint and the original receipt, back to the manufacturer. Exchanging or returning the product cannot be requested. Repairs do not confer any right to an extension of the warranty. Products that are returned directly to the manufacturer are NOT eligible for warranty.

General:

Fabric components and other parts subject to wear and tear:

- The fabric should be cleaned on a regular basis (follow the maintenance instructions).
- It is normal for the fabric cover to show a certain degree of wear and tear or discolouration due to sunlight after some time.

This Warranty Clause conforms to European Directive 99/44/EG of 25 May 1999.

9 QUESTIONS

Should you have any questions, please contact your supplier or importer (see the back of the instruction manual). Please have the following information at hand:

- Serial number from the sticker on the bottom of the frame.
- Age, height and weight of your child.

Quinny® buzz

United Kingdom
Dorel U.K.
Hertsmere House
Shenley Road
Borehamwood, Hertfordshire WD6 1TE
www.dorel.co.uk
Tel. 01842 763 281
Fax 01842 762 062
customer-care@uk-dorel.com

www.quinny.com