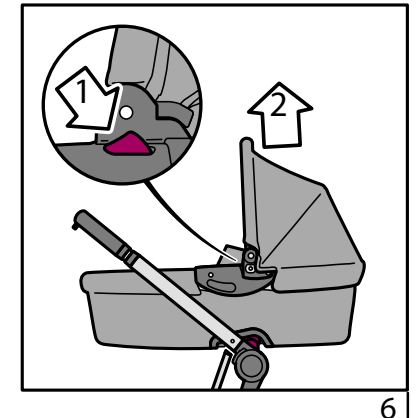
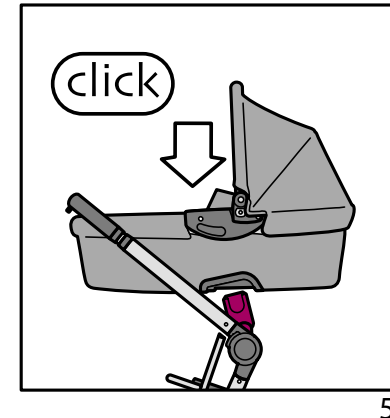
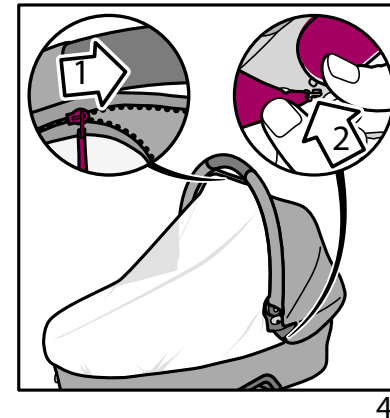
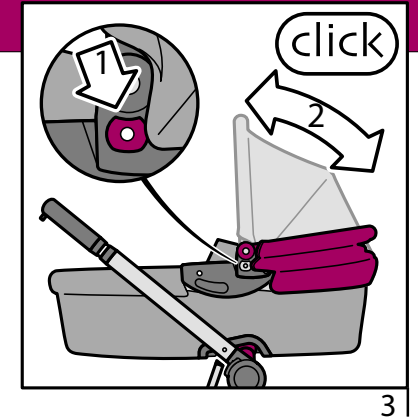
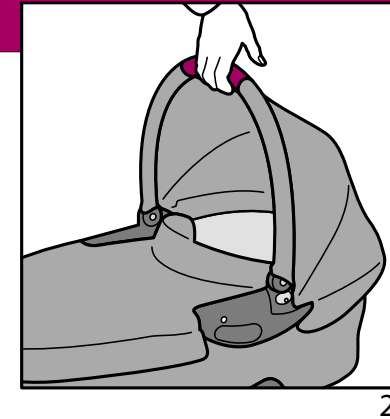
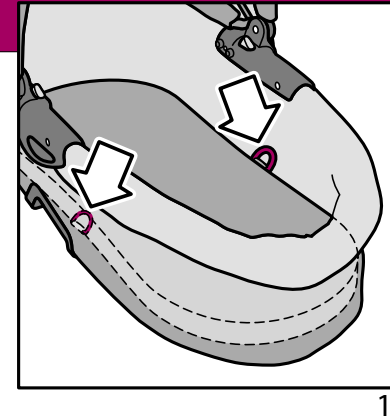


Quinny®  
buzz  
Dreami

Instructions for use & Warranty

Illustrations	3
<b>Instructions for use &amp; Warranty</b>	4 - 8
Warning: Keep for future reference	
Notes	9
Quinny Buzz legend	10

Start



**Congratulations**

Congratulations on the purchase of your Quinny Buzz Dreami.

Safety, comfort and user friendliness have played an important role in the development of the Quinny Buzz Dreami. This product meets the most stringent safety regulations.

Please take the time to read through the instruction manual carefully and make sure that anyone else using the product reads it as well. The Quinny Buzz Dreami only offers maximum safety when it is used in accordance with the instructions.

Continuous research by our development team, user tests and consumer reactions ensure that we are kept fully up to date in the field of child safety. If you have any questions concerning the use of your Quinny Buzz Dreami, please do not hesitate to contact us.

**General Instructions**

- No alterations may be made to the product. If you have any complaints or problems, please contact your supplier or importer.
- We advise against using the Quinny Buzz Dreami if parts are missing or it is damaged.
- Only use original accessories and parts approved by the manufacturer.
- Check the base and hood often for wear and tear.
- Do not remove the logos from the cover in order to prevent damage to the fabric.
- Unless instructed otherwise by your doctor, always place your baby on his back when sleeping and make sure he is not dressed too warmly.
- Do not use soft or poor circulating bedding (pillows, bumpers, duvets etc.) due to the risk of suffocation.
- When making the bed up make sure your child lies with his feet against the foot-end of the Quinny Buzz Dreami.
- Use a blanket or matching baby sleeping bag.
- Your child can be fastened securely in the Quinny Buzz Dreami using a safety harness. The D-rings on either side of the mattress can be used for this purpose. Make sure the harness complies with the following standard: BS 6684.

**Important! Keep for future reference****WARNING**

- Read the instructions manual carefully and keep it for future reference. Failure to follow these instructions may endanger the safety of your child.

**WARNING**

- You are personally responsible for the safety of your child.

**WARNING**

- We advise against using the Quinny Buzz Dreami for children who are able to sit up by themselves unassisted, roll over or push themselves up on their hands and knees (approx. 6 months, maximum of 9 kg).

**WARNING**

- Never leave your child unattended.

**WARNING**

- Do not use a mattress thicker than 30 mm.
- Do not place the Quinny Buzz Dreami near an open fire or other heat sources.
- Only place the Quinny Buzz Dreami on sturdy, horizontal and dry surfaces.
- Do not allow other children to play close to the Quinny Buzz Dreami unsupervised.

**WARNING**

- The Quinny Buzz Dreami is not a safe means of transport by car and should **NEVER** be used as such. Use a Maxi-Cosi child car seat for transport by car!
- The Quinny Buzz Dreami is approved according to the strictest European and British safety standards (EN 1888:2003/BS 7409) and is suitable for children from 0 to 9 kg (from birth to approx. 6 months).
- Try out this product a number of times before use.

**Warranty:**

Dorel UK guarantees that this product complies with all safety requirements as specified in current European safety standards, and that this product is free from defects in workmanship and material at the time of purchase. If this product shows material and/or workmanship defects after purchase or during the warranty period (with normal use as described in the instruction manual), Dorel UK will assume the responsibility to repair or replace it. The warranty period is 12 months for the metal frame and 12 months for the fabric components and other parts subject to wear, such as tyres and wheel bearings. Normal wear and tear that can be expected with daily use of this product is therefore hereby excluded.

The warranty does not apply in the following circumstances:

- The product is not offered for repair through a supplier approved by Dorel UK.
- The product is not supplied to the manufacturer together with the original sales receipt.
- The defect is the result of incorrect or negligent use, or maintenance that is contrary to the instructions given in this manual.
- Repairs have been carried out by third parties.
- There is discolouration, damage to the fabric or watermarks due to washing or rainwater, or excessive exposure to sunlight (UV).
- The defect is the result of negligence or damage to the fabric or frame due to a blow to the pushchair.
- The defect is the result of an accident or airplane travel.
- The defect is the result of overloading (exceeding the maximum weight allowance for the child and any items being carried).
- The defect is the result of using a standing board or seat for a 2nd child.

- There is normal wear and tear to the wheels, tyres and/or fabric (such as a flat tyre and/or loose press studs).
- The product has been involved in a "collision" with a sidewalk kerb or heavy shop door, causing the wheels and/or axles to be thrown out or alignment or bend, as a result of which the pushchair no longer tracks well.
- There is damage to surfaces, such as plastic laminate floors, due to tyre marks.
- The stated warranty terms and conditions have not been satisfied.

**Date of effect:**

- The warranty period goes into effect as of the date of purchase of the product.

**Warranty term:**

- The warranty on the frame is valid for a period of 12 consecutive months. A term of 12 consecutive months applies to the fabric components and other parts susceptible to wear and tear. The warranty applies solely to the original owner and is non-transferable.

**If you discover a defect:**

- In the event of a defect, contact your retailer. If your retailer is unable to assist you, he will return the product to the manufacturer together with a description of the complaint and the original, dated sales receipt. Products that are returned directly to the manufacturer will **NOT** be eligible for the warranty.

**Fabric and other parts subject to wear:**

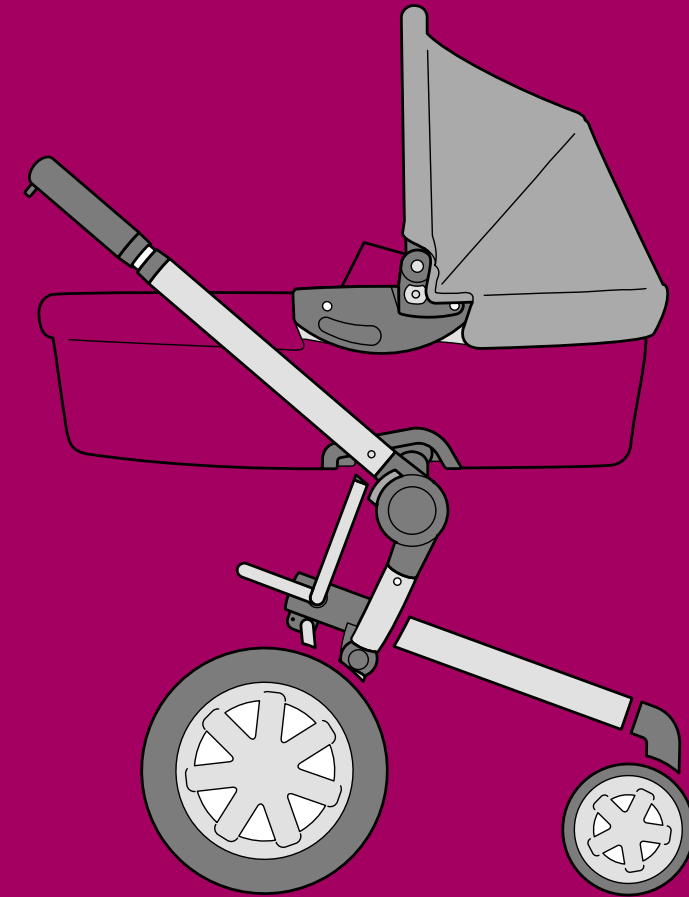
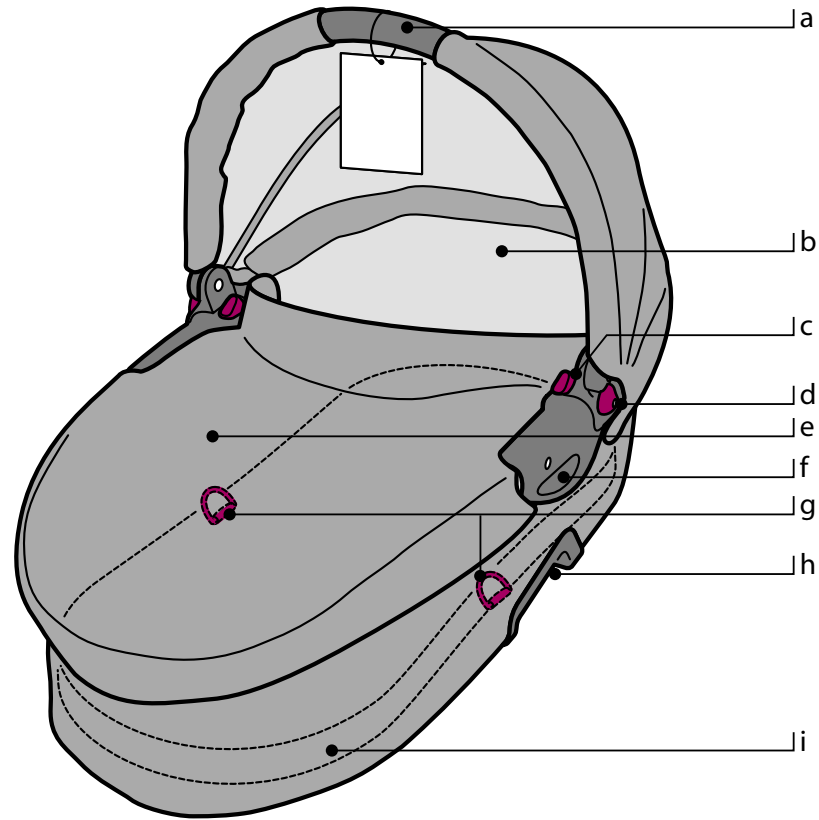
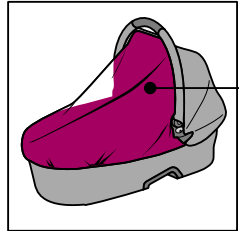
- The cover should be cared for properly (see the section on caring for this product). It is normal for fabric to discolour from sunlight and to show wear and tear after a long period of use, even when used normally. The warranty period for the cover and other parts subject to wear, such as the tyres, is therefore limited to a period of no more than 12 months as of the date of purchase.

**Legend**

For illustrations see page 10

- a. Hood with carrying handle
- b. Lining
- c. Control button for attaching to pushchair
- d. Control button for hood
- e. Cover
- f. Handle
- g. D-rings
- h. Adapter opening
- i. Mattress
- j. Mosquito net





Quinny®  
buzz  
Dreami

**UNITED KINGDOM**

Dorel U.K.  
Hertsmere House  
Shenley Road  
Borehamwood  
Hertfordshire WD6 1TE  
Tel. (020) 8 236 0707  
Fax (020) 8 236 0770